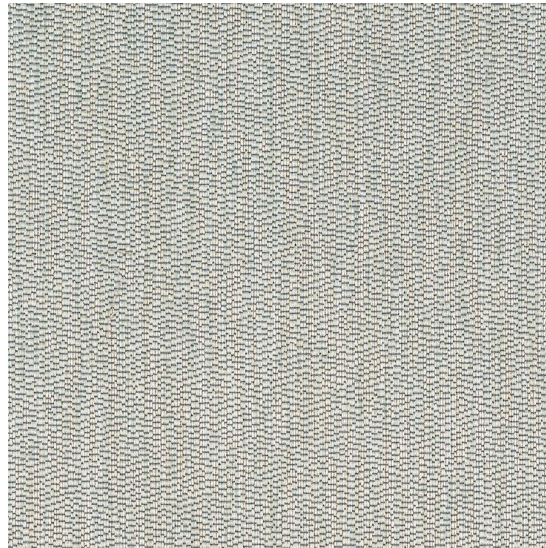




JASPER
MICHAEL S SMITH
JASPER SHOWROOM



La Scala - Mist

Templeton Fabric T1053-03

Description: The design of La Scala is inspired by the parapets and ceiling pattern of the legendary Italian opera theaters, which were designed with a uniform aesthetic. The combination of intricate costumes, musical instruments, and various stage props are the wonders that gives inspiration to this pattern. La Scala has a refined hand quality and is highly suitable for upholstery use. Soft but durable, the yarns woven throughout create an aesthetically sophisticated yet very functional textile.

Width: 53"W

Content: 45% Cotton, 30% Viscose, 15% Acrylic, 10% Linen