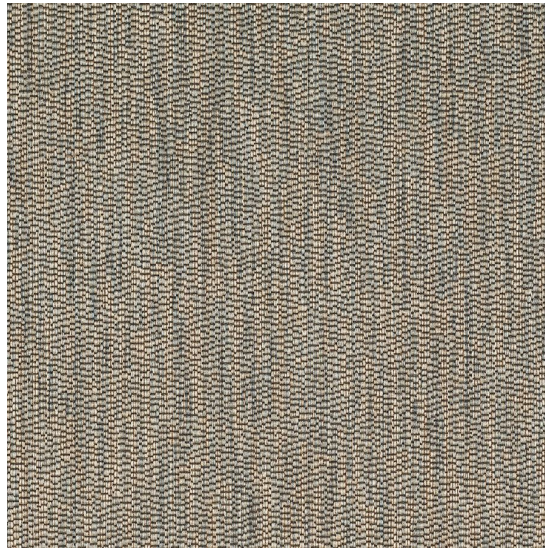




JASPER  
MICHAEL S SMITH  
JASPER SHOWROOM



## La Scala - Woodsmoke

Templeton Fabric T1053-05

---

**Description:** The design of La Scala is inspired by the parapets and ceiling pattern of the legendary Italian opera theaters, which were designed with a uniform aesthetic. The combination of intricate costumes, musical instruments, and various stage props are the wonders that give inspiration to this pattern. La Scala has a refined hand quality and is highly suitable for upholstery use. Soft but durable, the yarns woven throughout create an aesthetically sophisticated yet very functional textile.

**Width:** 53"W

**Content:** 45% Cotton, 30% Viscose, 15% Acrylic, 10% Linen