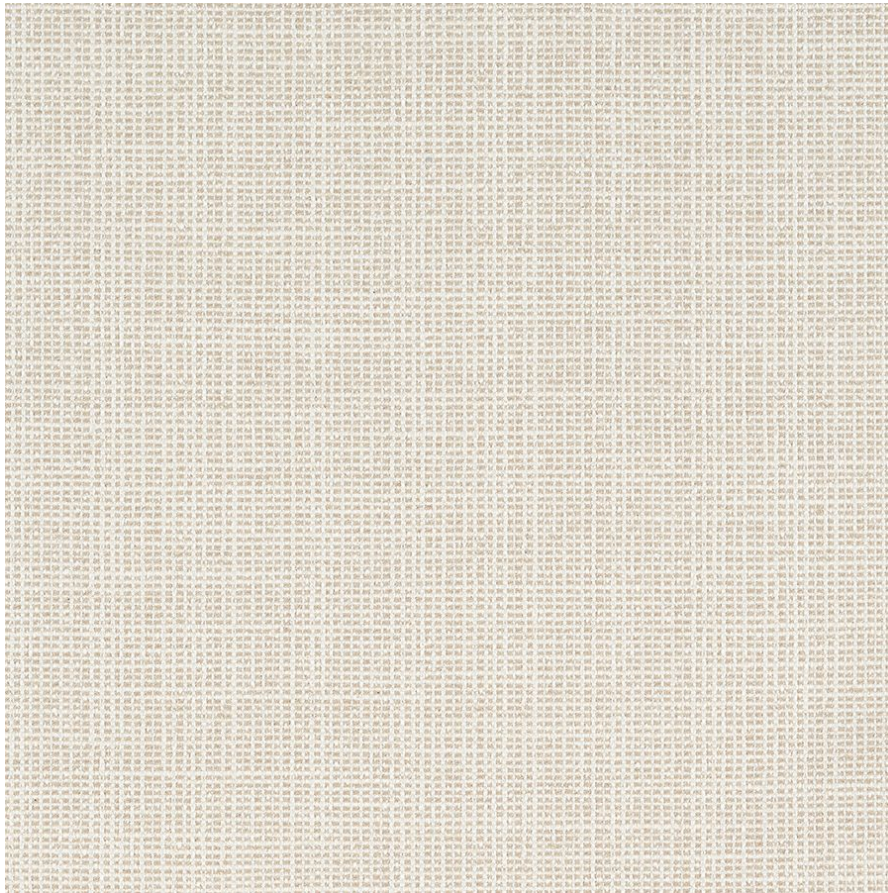




JASPER
MICHAEL S SMITH
JASPER SHOWROOM



Strada - Cream

Templeton Fabric T1055-01

Description: Strada, or “street” in Italian, was inspired by the beautifully aged cobbled Barbaresco Path linking the villages of Neive and Barbaresco. An expert weave of linen, cotton, and viscose creates a fresh, textured surface that gives life and movement to the pattern.

Width: 53"W

Content: 42% Linen, 34% viscose, 24% Cotton